



Annual Report 2021 The Girl Scout Difference

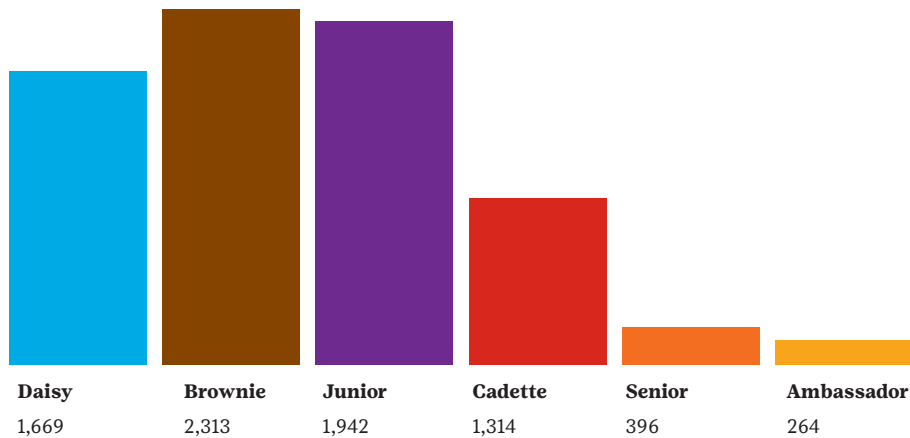
girl scouts
of north-central
alabama

October 1, 2020 - September 30, 2021

11,759 Total Members

8,693 Total Girls
1,759 Total Volunteers

3,186 Total Adults
865 Lifetime Members



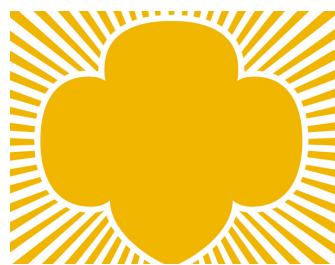
36 Counties
5 Service Centers
4 Camps



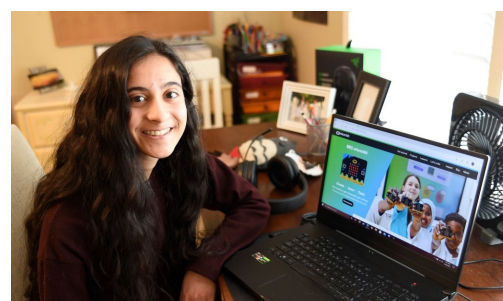
149 BRONZE AWARDS



101 SILVER AWARDS



30 GOLD AWARDS



Maleah Brady, GSUSA Gold Award Scholarship Recipient

Gold Award Girl Scouts

Jackie Anderson, Jefferson County
 Aubrey Blomeley, Madison County
 Maleah Brady, Jefferson County
 Lauren Burkett, Calhoun County
 Taylor Carden, Chilton County
 Hannah Collette, Tuscaloosa County
 Samantha Cost, Chilton County
 Roshni Datta, Jefferson County
 Avery DeBerry, Shelby County
 Isabell Dettling, Jefferson County
 Mary Downs, Madison County
 Olivia Downs, Madison County
 Arabella Gonzalez, Shelby County
 Destoni Hayes, Etowah County
 Kaitlyn Huff, Calhoun County

Katherine Huggins, Lauderdale County
 Abigail Mann, DeKalb County
 Alyssa Nance, Madison County
 Selena Necklaus, Jackson County
 Aanya Noorani, Jefferson County
 Lillian Pennington, Limestone County
 LaShay Robbins, Cullman County
 Ayona Roychowdhury, Jefferson County
 Natalie Ruha, Shelby County
 Tristen Sellers, Tuscaloosa County
 Bethany Stoots, Madison County
 Kailan Thomas, Madison County
 Anna Turner, Cullman County
 Kiah Warner, Madison County
 Julia Wilhide, Madison County

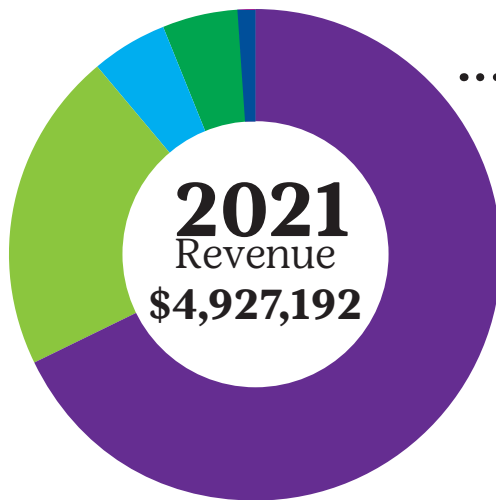
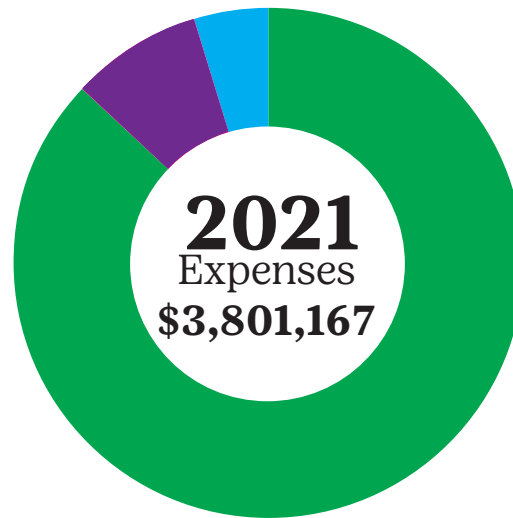
2020-2021 FINANCIALS

**For our full 990 and Audit, please visit our website.*

Expenses

Total \$3,801,167

- 87% Program Services **\$3,309,368**
- 8.4% Administrative **\$316,375**
- 4.6% Fundraising **\$175,424**



Revenue

Total \$4,927,192

- 68% Product Program & Retail Sales **\$2,550,738**
- 21% United Way/Charitable Contributions **\$1,735,727**
- 5% Program Fees **\$197,539**
- 5% Rental & Investment Income **\$398,282**
- 1% Other/Special Events **\$44,906**

PRODUCT PROGRAMS

35,824 Units sold during Fall Product Program

1,057 Girls participating in Fall product program

1,130,493 Packages of Cookies Sold

3,824 Girls participating in Girl Scout cookie program

20,556 Packages of Cookies Donated to Soldier's Angels and Hometown Heroes communities.

TrailblazerTV
Powered by Girl Scouts of North-Central Alabama

Watch now on Roku, trailblazertv.org,
 or the Trailblazer TV app,
 available on Apple and Android devices.

GSNCA launched Trailblazer TV, the first and only Girl Scout streaming channel in December of 2020. Since then, over 1400 unique users have viewed over 100 programs. Trailblazer TV is fully funded through grants and gifts from generous supporters.

UNITED WAY PARTNERS

Chilton County United Way
Jackson County United Givers Fund
United Givers Fund of DeKalb County
United Way of Athens-Limestone County
United Way of Central Alabama
United Way of Cullman County
United Way of East Central Alabama
United Way of Etowah County
United Way of Marshall County
United Way of Morgan County
United Way of North Talladega County
United Way of Northwest Alabama
United Way of West Alabama

**Special Thanks to all of
our Supporters for making
Girl Scouts possible!**

Corporate & Foundation Supporters

\$5,000 and up

Lewis Communications
Charles A. Hamilton Charitable Trust
The Caring Foundation
Daniel Foundation of Alabama
Girl Scouts of the USA
Community Foundation of West Alabama
Community Foundation of Greater Birmingham
Protective Life Corporation
Publix Super Markets Charities, Inc.
Vulcan Materials Company Foundation
Mercedes Benz U.S. International
Coca-Cola Bottling Company United, Inc.
American Association of University Women
Alabama Humanities Alliance
Tuscaloosa County Community Corrections Program
Raytheon Technologies
Servis First Bank

BOARD OF DIRECTORS

Onna Cunningham President	Blair Liggins
Claudette Smith 1st VP	Keith Miller
Jacqueline Gardner 2nd VP	Melissa Morrison- Ellis
Sheri Cain Secretary	Jessica Payne
Meredith Smith Treasurer	Kristi Smith
Danielle Oliver Delegate Coordinator	Crystal Smitherman
Michale Butts	Adrian Marsalis
Nancy Colin	Solomon
Beth Deason	Gayla Sudderth
Tammy Driskill	Christy Thomas
Sandy Edwards	Dr. Cynthia Warrick
Ramona Graffeo	
Becci Hart	

Girl Liasons

Jane Bae
Kaitlyn Beard
Miracle Burwell
Rebekah Dale

SENIOR STAFF

Karen Peterlin
Chief Executive Officer
Laura Elliott
Chief Girl Experience Officer
Nicole Fults
Chief Operating Officer
Jennifer Sholund
**Chief Development and
Communications Officer**
Gina Walley
Chief Financial Officer


girl scouts
of north-central
alabama